

CB.0700.0800.0800.SOLAR LIGHTING DESIGNS

CB.0700.0800.0800.SOLAR LIGHTING DESIGNS

H 700 X W 800 X L 800

WEIGHT APPROX 985KG

2 of 2.5 tonne lifting point (cone anchor)

20MPa concrete

85% recycled materials

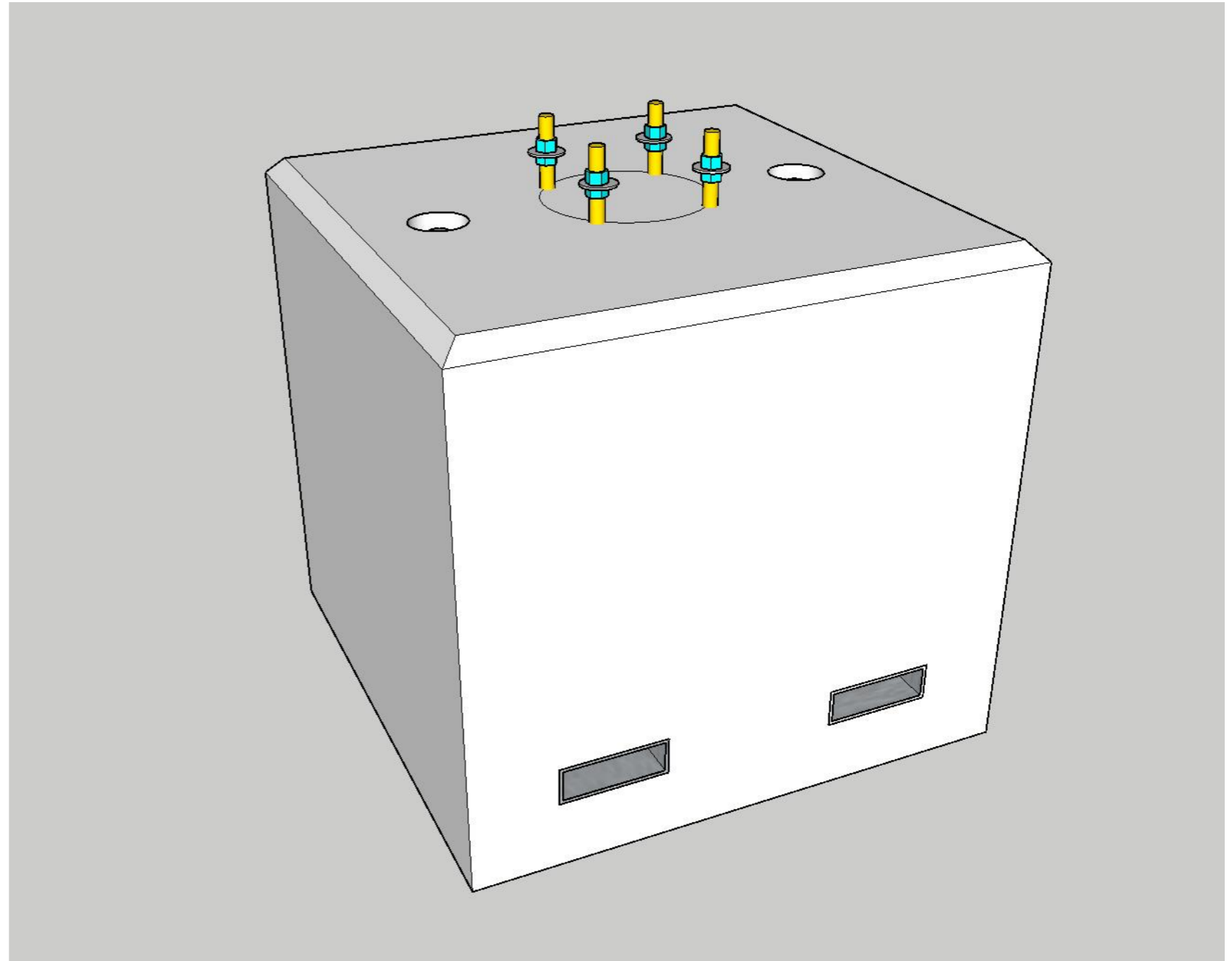
Notes:

1. 4 OF M20 HOLD DOWN BOLT AT 233MM PCD
2. 2 OF 145X45MM (INTERNAL) FORKLIFT POCKET (GALVANISED RHS SECTION)
3. 2 OF SL82 REINFORCING MESH

Due to the nature of the raw ingredients required to make concrete, our precast concrete products may contain greater than 1% crystalline silica. Breathing in respirable crystalline silica can lead to serious lung diseases.

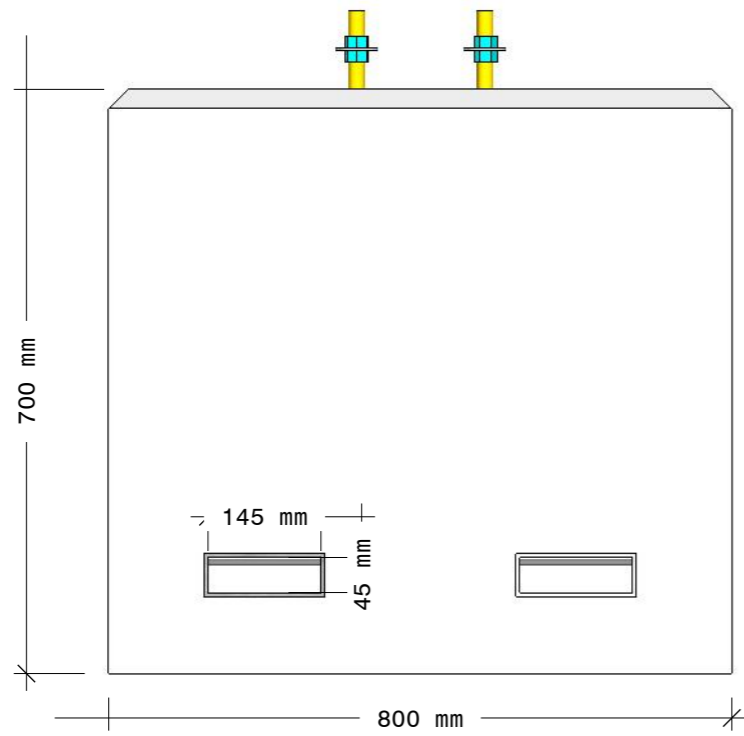
Customers are advised to take all necessary precautions when modifying our products (including but not limited to drilling, grinding, cutting, polishing or any other activity that may cause release of respirable crystalline silica) to minimize the risk of exposure to silica dust. This may include wearing appropriate personal protective equipment and using proper ventilation.

*We strongly recommend that you familiarise yourself with the Managing respirable crystalline silica dust exposure in construction and manufacturing of construction elements Code of Practice 2022 published by Work Safe Queensland **before** conducting any activities that may expose you or your employees to silica dust.*

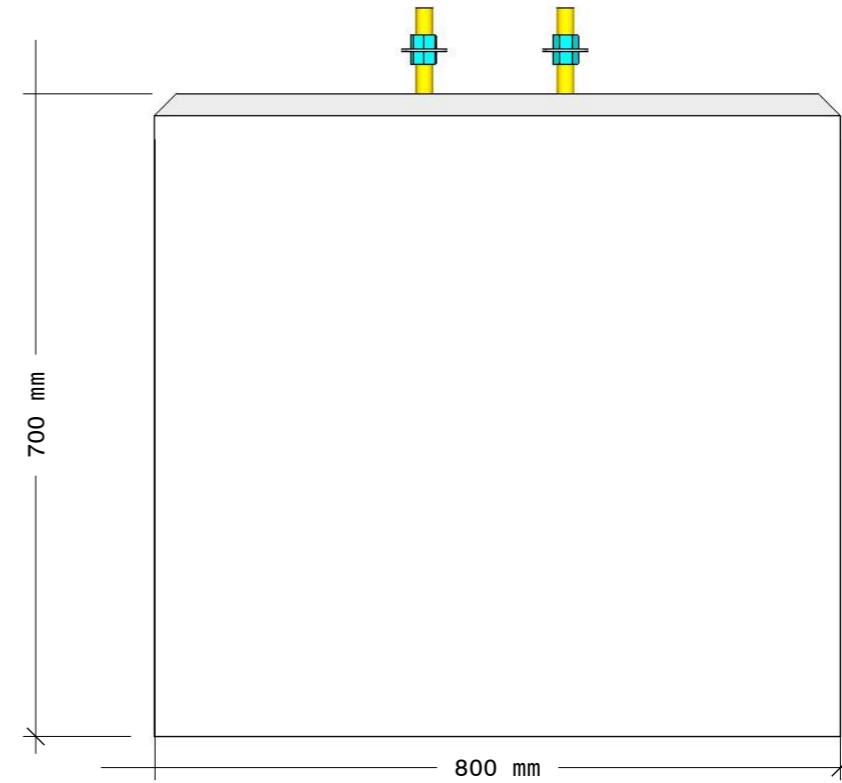


sustainable precast concrete

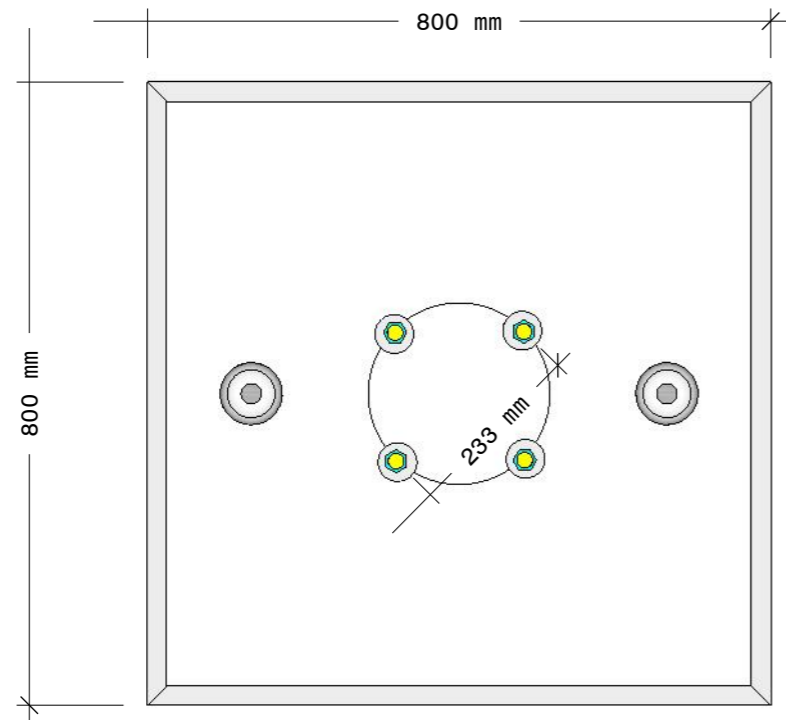
FRONT VIEW



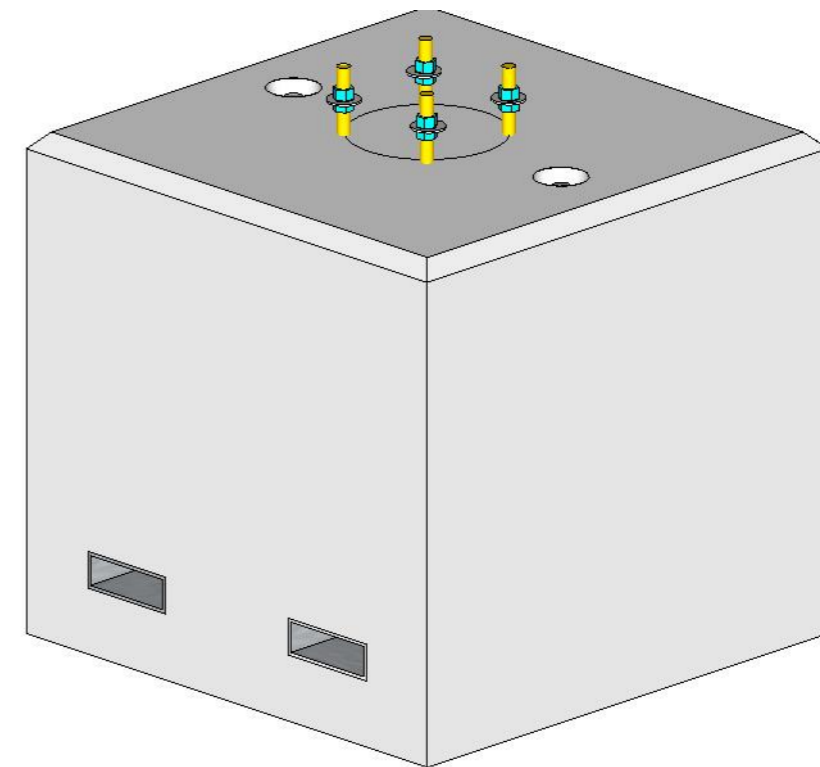
RIGHT SIDE VIEW



TOP VIEW



ISOMETRIC VIEW



Disclaimer: This drawing has been prepared by Precast Concrete Aust Pty Ltd. This drawing is intended for conceptual purposes only. Anyone making use of this drawing does so at their own risk and assumes all liability for such use. Final design for construction purposes must be completed by a Registered Professional Engineer who is familiar with the product and who has taken into account site specific conditions.

FRONT, RIGHT, TOP AND ISO



CB.0700.0800.0800.SOLAR LIGHTING
DESIGNS

A 01

PRODUCTION INFORMATION

PART NUMBER	CB.0700.0800.0800
QTY REQUIRED	5 OF
FINISH	TROWEL
CONCRETE MIX	20 MPA

QC CHECK - PREPOUR

ITEM	DETAIL	INITIAL
DIMENSIONS	CHECKED	
REINFORCING	CHECKED	
LIFTERS	SIZE & POSITION	
MOULD	BRACED & SEALED	
CAST-INS	SIZE & POSITION	

QC CHECK - POST POUR

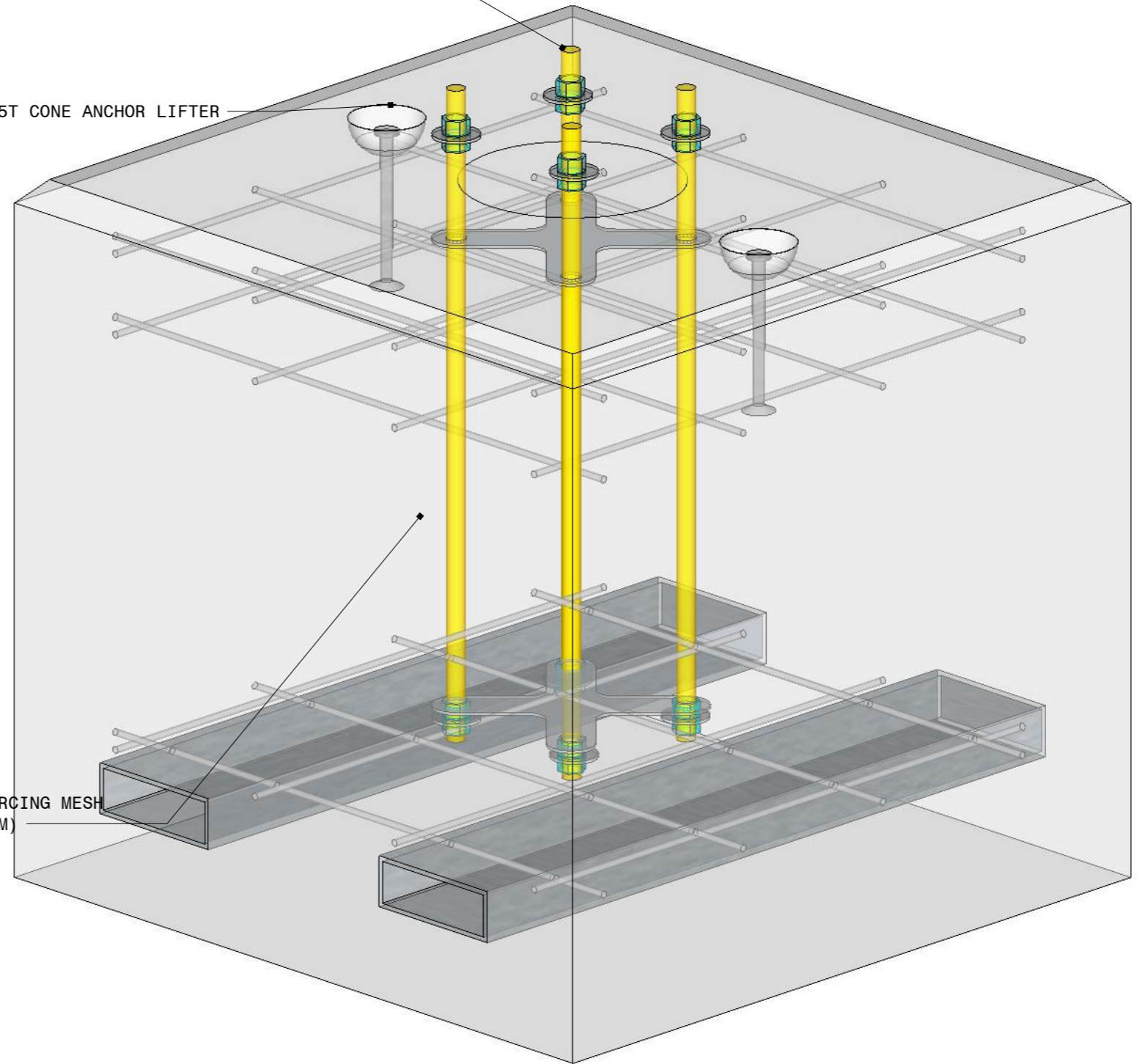
ITEM	DETAIL	INITIAL
LIFTERS	POSITION	
CAST-INS	SIZE & POSITION	
DIMENSIONS	CHECKED	
READY FOR DISPATCH	DATE:	

4 OF M20 HOLD DOWN BOLT AT 233MM PCD

2 OF 2.5T CONE ANCHOR LIFTER

2 OF FORKLIFT POCKET 145 X 45MM INTERNAL DIMENSIO

2 SHEETS OF SL82 REINFORCING MESH (MIN COVER 50MM)



Disclaimer: This drawing has been prepared by Precast Concrete Aust Pty Ltd. This drawing is intended for conceptual purposes only. Anyone making use of this drawing does so at their own risk and assumes all liability for such use. Final design for construction purposes must be completed by a Registered Professional Engineer who is familiar with the product and who has taken into account site specific conditions.

CHECKLIST W XRAY



**CB.0700.0800.0800.SOLAR LIGHTING
DESIGNS**