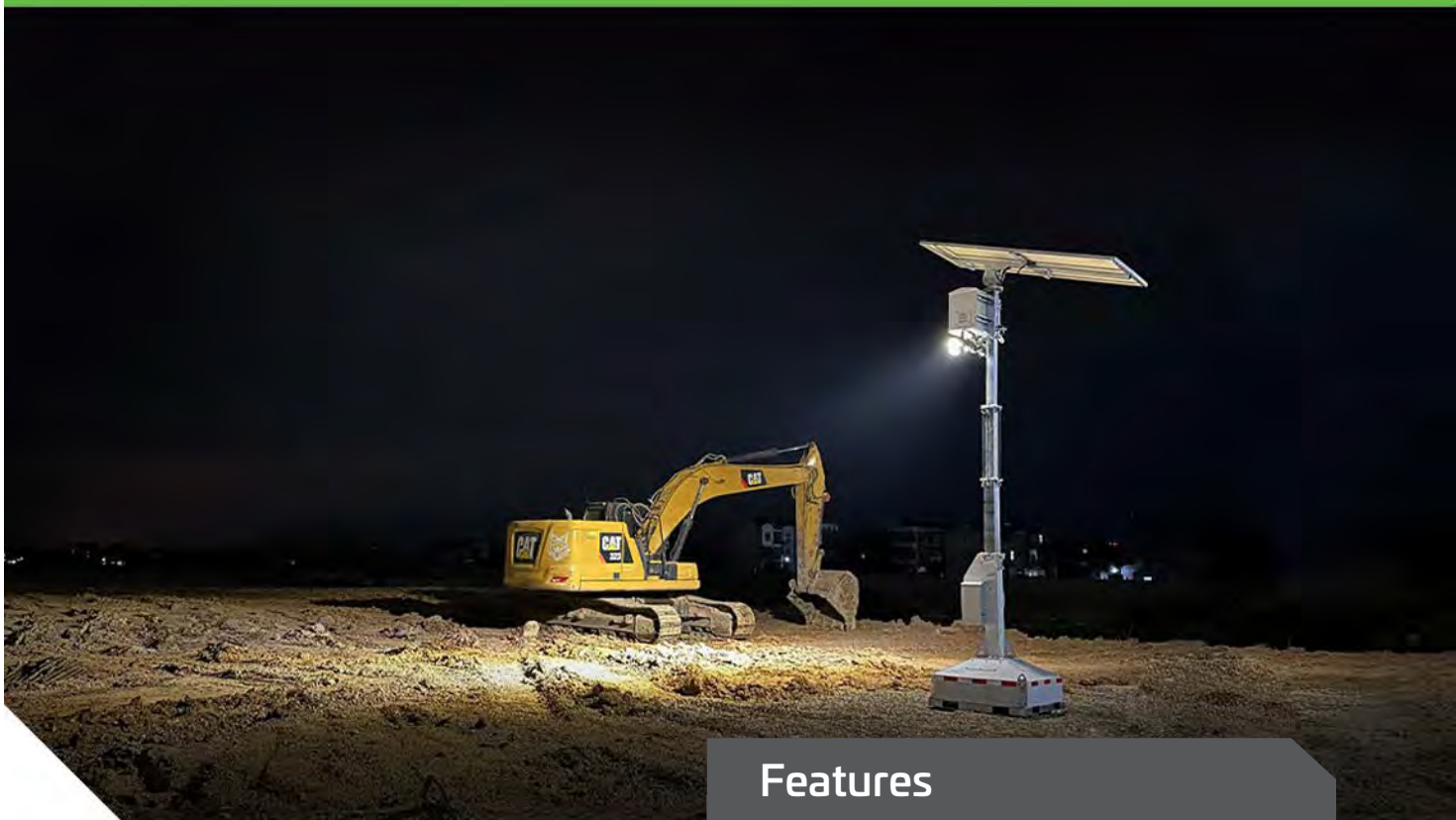


SLD RELOCATABLE LIGHTING TOWER



Solar Lighting Designs



Features

The SLD Relocatable Solar Lighting Tower is ideal for temporary or semi-permanent illumination of car parks, construction sites, mining camps, events, and roadworks. Forklift tyne access points and a height adjustable telescopic tower ensure ease of transport and minimal setup time on site.

A premium 200 Amp Hour LiFePO₄ battery combined with the light output achieved by the 160 lumen/watt pivoting LED's deliver superior dusk to dawn lighting. The exceptional 19200 lumen output is dimmable in 25% increments further increasing the autonomy. The 435w solar panel solar panel can be rotated 360 degrees horizontally and 90 degrees vertically ensuring maximum photovoltaic conversion and minimum recharge time. Bird spikes are a standard feature.



Luminaire Height	Up To 4m
Lumen Output	19200 lm
LED Output	2 x 60w

Over 1000 Sqm of illumination (at 1 lux)

Easily transported and relocated

Minimal set up time on site

Constant output lighting (no PIR)

Ideal for temporary or semi-permanent illumination

160 lumen per watt

Dimmable in 25% increments

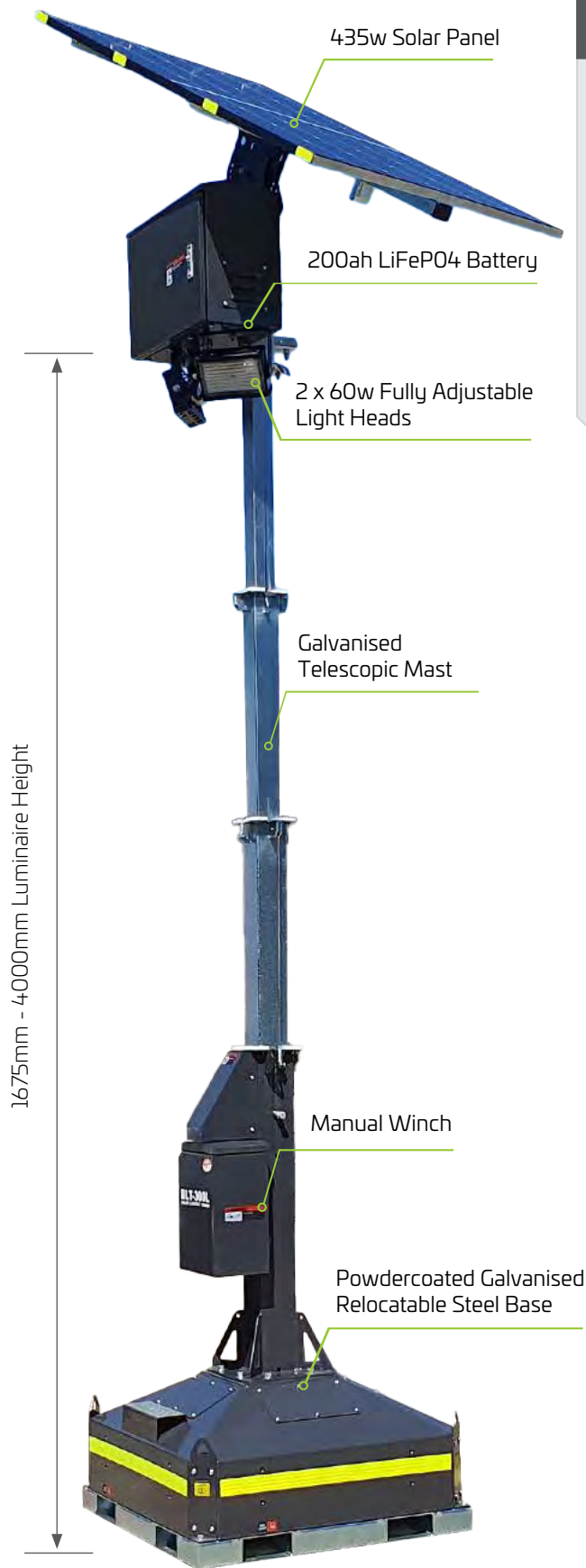
Inbuilt customisable smart programs

Adjustable light head and solar panel orientation and angle

Telescopic mast extends up to 4 metres high

2 year warranty for faulty workmanship or component failure not influenced by external means

SLD RELOCATABLE LIGHTING TOWER SPECIFICATION

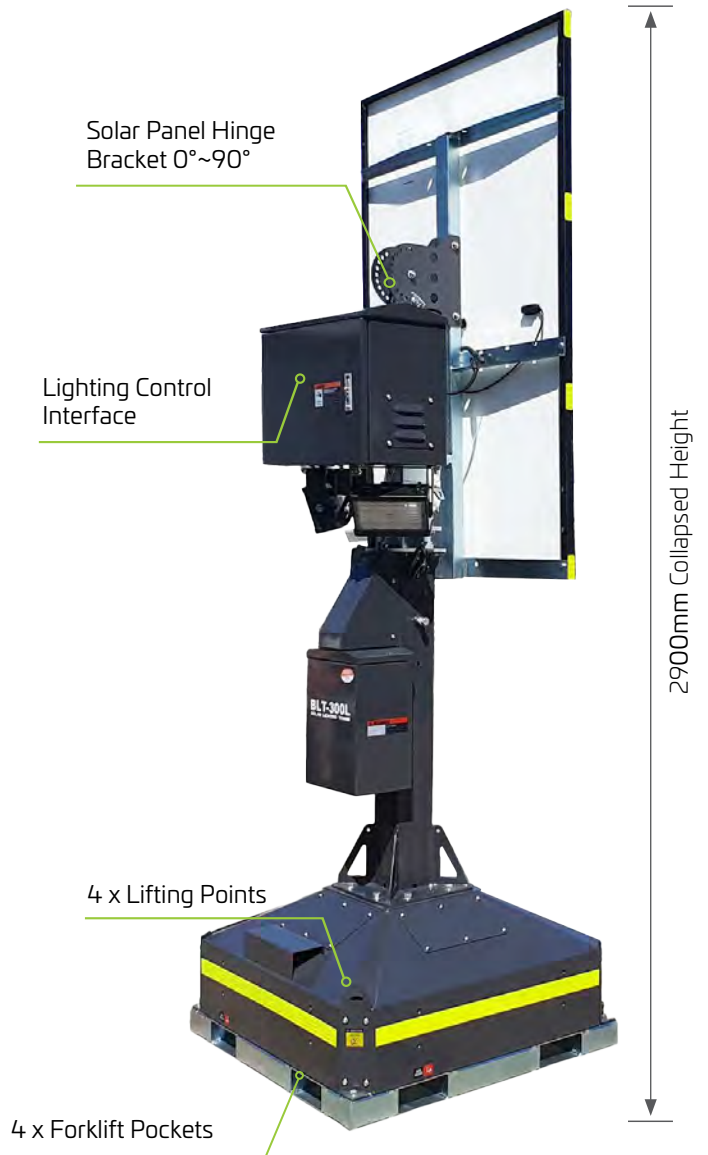


Mode of Operation

The SLD Relocatable Lighting Tower features 4 smart programming modes.

- Manual on/off
- Automatic dusk on/dawn off
- Programmable lighting periods
- Programmable timer control

Please see the full instruction guide for in-depth explanations of the above modes.



As we continue to improve the products function and/or design specifications and data provided may change without notice. Errors and omissions accepted.

SLD RELOCATABLE LIGHTING TOWER SPECIFICATION

General Data

Dimensions (collapsed)	1000 x 1000 x 2900mm
Dimensions (full extension)	1800 x 1150 x 5175mm
Weight	430kg
System Voltage	12V
Wind Rating (full extension)	80km
Warranty	2 Years
SKU	MLT435

Lighting Data

LED Light Head	2 x 60W
Lumen Output (25% Output)	4800lm
Lumen Output (50% Output)	9600lm
Lumen Output (75% Output)	14400lm
Lumen Output (100% Output)	19200lm
Correlated Colour Temp (CCT)	5000K
Protection Class	IP65

Power Bank Data

Solar Panel Wattage	435W
Solar Panel Mounting Angle	0°~90° Manually Lifted
Recharge (100% output for 10 hours)	4 Hours
Battery Type	LiFePO4
Battery Specifications	12.8V 200AH (2560Wh)
Lighting Time (25% Output)	76.8 Hours
Lighting Time (50% Output)	38.4 Hours
Lighting Time (75% Output)	25.6 Hours
Lighting Time (100% Output)	19.2 Hours

240v Charger Data (Included)

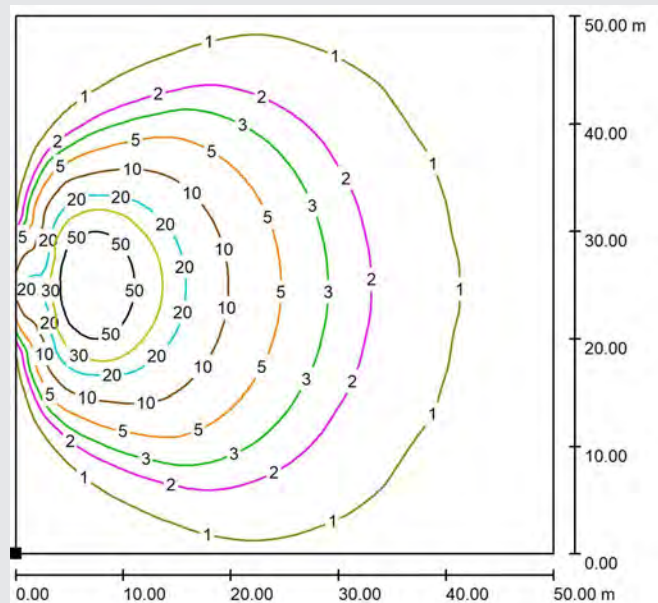
Rated Power	1.5kW/1.5kVa
Input Voltage	AC240V
Charger Time	2.5 Hours



Mast and Base Data

Mast Finish	Galvanised Steel
Fasteners	304 Grade Stainless Steel
Wire Rope	316 Grade Stainless Steel
Height (full extension)	4m
Lifting method	Manual Winch
Base Finish	Powdercoated Galvanised Steel
Forklift Pockets	4
Lifting Points	4

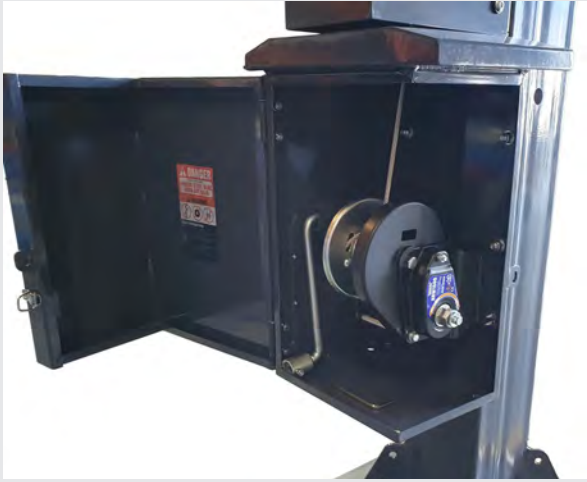
Dialux Data



As we continue to improve the products function and/or design specifications and data provided may change without notice. Errors and omissions accepted.

SLD RELOCATABLE LIGHTING TOWER SPECIFICATION

Manual Lifting Winch



Solar Panel Adjustable Hinge



60w LED Light Head



Relocatable Steel Base



Battery and Control Box



System Control Panel



As we continue to improve the products function and/or design specifications and data provided may change without notice. Errors and omissions accepted.